



**ORGANIC
BIOACTIVES**
NEW ZEALAND

INNOVATING FROM TRADITION™

OceanDerMX™

BALANCE & BRIGHTEN

Snow White Effect Naturally
*Visibly brightened complexion
in only 14 days*

*New Zealand botanicals
sustainably harvested by
indigenous Māori communities
according to their ancient
harvesting practices*



COSMOS
APPROVED



NEWZEALAND.COM
Licence No.100685



CHINA
COMPLIANT

RAW MATERIAL VERIFIED BY ECOCERT GREENLIFE,
CONFORM TO THE COSMOS STANDARD

IPONZ PATENT
No. 793027

SYNCHRONISED MODES OF ACTION

OceanDerMX™ Balance & Brighten is marine active, which is an aqueous extract of the leaves of *Sarcothalia circumcincta*, *Cyathea medullaris* fronds, *Centella asiatica* leaves and *Glycyrrhiza alba* roots obtained by water extraction TPT Xtraction™ technology.

Extracting the four plants together provides **brightening activity** and a **clearer, smoother complexion**, proven in only 14 days.

KEY BOTANICALS



NEW ZEALAND NATIVE RED SEAWEED

The seaweed harvested from the pure waters of New Zealand is abundant in a vital group of **sulphated glycans** or **sGAGs**. These glycans share a similar structure to hyaluronic acid and have a crucial role in cell-to-cell communication. They not only attract and retain moisture in the skin, but they also contain naturally occurring proteins, amino acids, peptides, vitamins, minerals, and essential element.



MAMAKU - NEW ZEALAND NATIVE BLACK FERN

Mamaku, which is indigenous to New Zealand, is **rich in polysaccharide gel (glucuronomannans)** obtained from the meristem, the embryonic stage of the leaf. When used on the skin, the polysaccharide forms a 3D viscoelastic matrix that offers immediate lifting and tightening properties to the skin.



NEW ZEALAND GROWN GOTU KOLA

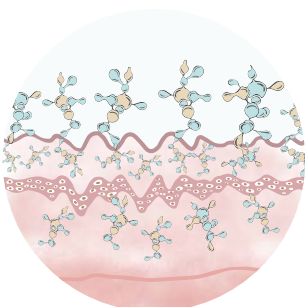
Centella asiatica (Gotu Kola), is a powerful, time and science proven **skin brightening ingredient**. It regulates pigmentation of the skin and inhibits inflammatory process in the skin – the main cause of hyperpigmentation. One of its crucial bioactive components is **asiaticoside, that inhibits the expression of tyrosinase**. This, in turn, can reduce melanin production, ultimately diminishing hyperpigmentation.



LIQUORICE ROOT

Glycyrrhiza glabra (Liquorice root), is a popular traditional cosmetic ingredient for skin brightening and depigmentation. It works by **inhibiting the production of tyrosinases** to combat the over production of melanin causing hyperpigmentation.

GLYCANS – THE KEY TO YOUTHFUL LOOKING SKIN



Glycans play a major role in skin vitality and delivery of bioactives via their vibrant intra and extracellular communication



sGAGs in OceanDerMX™ range stained with Alcian blue stain

CLINICAL STUDIES

IN VIVO

SUBJECTIVE STUDY EVALUATED BY DERMATOLOGIST

After 14 days of use:

- 93% of the subjects noticed clearer complexion
- 89% of the subjects noticed a more uniform complexion
- 93% of the subjects noticed a smoother complexion
- 82% of the subjects noticed more radiant skin

Evaluation of the Clinically Efficacy of **OceanDerMX™ Balance & Brighten at 5%** on Lightning & Brightening Activity on Asian Volunteers



BEFORE



DAY 14

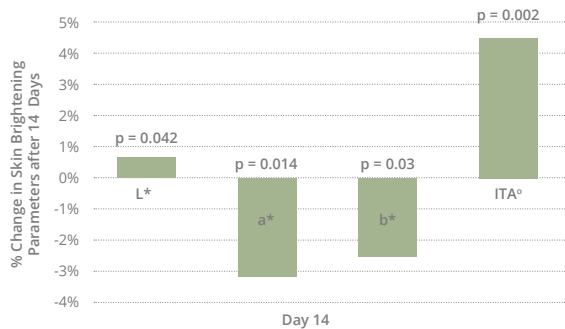


DAY 56

Images show the reduction in pigmentation and/or brightening effects of OceanDerMX™ Balance & Brighten at 5% after 14 days.

Photographs were taken using the Vista· CR skin imaging system, using the S2 (Standard 2 flat lighting) mode.

% Significant Improvement after Treatment with OceanDerMX™ Balance & Brighten at 5%

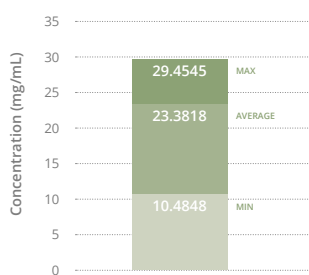


After 14 days of product application, there was significant improvement in all parameters (L* (p = 0.042), a* (p = 0.014), b* (p = 0.03) and ITA° (p = 0.002)) tested, indicating that the product has a lightening effect.

Significant Improvement after Treatment (14 days) with OceanDerMX™ Balance & Brighten at 5%.

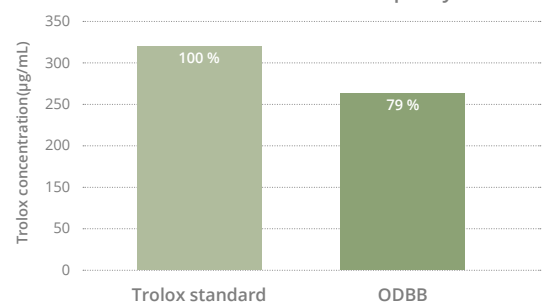
ANALYTICAL DATA

sGAG Concentration of OceanDerMX™ Products



Average sGAG quantity in OceanDerMX™ products
23.3818 mg/mL ± 5.25572

OceanDerMX™ Balance & Brighten Relative total Antioxidant Capacity



CUPRAC [CUPric Reducing Antioxidant Capacity] method

TECHNICAL & REGULATORY

INCI:

Aqua & Sarcothalia circumcincta & Cyathea medullaris leaf & Centella asiatica leaf & Glycyrrhiza glabra (Licorice) root extract

TECHNOLOGY:

TPT Xtraction™ (Bio-liquefaction) process

GENERAL USE:

1% – 5% for general use, 5% for intense balance and brightening benefits

REGULATORY:

Certified Vegan, China Compliant, Ecocert & Cosmos Approved

NONE OF THE INGREDIENTS ARE DERIVED FROM GENETICALLY MODIFIED ORGANISMS (GMO) WITH ALL THE PLANTS MEETING THE ORGANIC DEFINITION OF THE ISO 16128 STANDARD.

PROVEN BENEFITS

- Visibly brightened complexion in only 14 days
- Visibly smoother and more radiant skin in only 14 days

APPLICATIONS

- Brightening skincare lines
- Day / night skincare lines
- Essences and serums
- Skincare boosters
- Masks

ABOUT ORGANIC BIOACTIVES

Organic Bioactives brings the power of New Zealand's rich and bountiful biodiversity together with innovative green biotechnologies to create high-efficacy cosmetic bioactives.

We are committed to Tikanga Māori – the inherited values and practices of the indigenous people of Aotearoa New Zealand.

For that reason, we keep the process of harvesting with Māori communities who still carry the traditional knowledge on how to approach our native habitat in a respectful and sustainable way.

New Zealand is being internationally recognised as a biodiversity hotspot that is both abundant and unique. The impact of high UVB sunlight on its plants produce superior levels of bioactivity not found anywhere else in the world. For this, we are grateful and blessed.

DISCLAIMER

This brochure is not intended for final consumer or to advertise your products to final consumers without our written approval. No claims related to the ingredients and formulation shall be made without our prior written approval - [even though the claims are presented in this brochure] The person using the ingredients or formulation from this brochure is solely responsible that the final products, labeling, packaging, advertising and claims comply with local cosmetic laws and regulations.



Organic Bioactives Ltd.

Tasman Building, Suite B, Level 1
16-22 Anzac Avenue
Auckland 1010
New Zealand

info@organicbioactives.com

www.organicbioactives.com